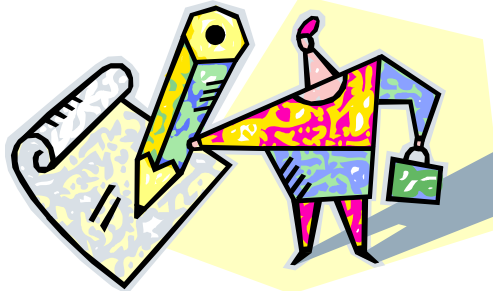


Wednesday, October 11, 2006
Day-At-A-Glance

Time	S.S. Stanford	S.S. Blaisdel	S.S. Emerald	S.S. Nevada	ECHO Restaurant	Atrium II A	Atrium II B
7:00-8:30	Breakfast in Atriums II & III						
8:45-10:15	W1 Business Meeting Queen of the Lake Ballroom Keynote Speaker: Kathy Martinez						
10:30-11:45	W2 Kathy Martinez	W3 Counseling CIG Meeting	W4 PM CIG Meeting	W5 DD CIG Meeting	W6 ABI/Speech CIG Meeting	W7 Deaf/HH CIG Meeting	W8 CET CIG Meeting
11:45-1:00	Convention Debriefing with Executive Board and Convention Committees						

We value your input!
Don't forget to turn in your
CAPED Convention
Evaluation Form at the
Registration Desk!



Wednesday, October 11

Sessions and Events

7:00 a.m. – 8:30 a.m.

Atriums II and III

Breakfast

8:45 a.m. – 10:15 a.m.

Queen of the Lake Ballroom

W1 Business Meeting
Keynote Speaker: Kathy Martinez,
Director, World Institute on
Disability

The annual business meeting of the full CAPED membership introduces the new CAPED Officers and CIG chairs to the general membership. The President, and other members of the CAPED Officer's Council, including the CAPED Treasurer, gives annual reports. Convention, Scholarship and Historian Reports are presented.

The featured invited speaker for the meeting is Kathy Martinez. Blind since birth, Martinez is an internationally-known disability rights leader specializing in employment, asset building, independent living, international development, diversity and gender issues. Since 2000 Kathy has supervised the World Institute on Disability's technical assistance, international, employment, poverty reduction and training projects. This spring, she led developmental activities with disabled women in Ethiopia for the International Labour Organization, and

has collaborated on projects in Brazil, China, Indonesia, Honduras, Hungary, Korea, Namibia, New Zealand, Norway, Mexico, Russia, South Africa, and Spain.

10:30 – 11:45 a.m.

S.S. Stanford

Strand: G
W2 Kathy Martinez

Please attend an informal session with Kathy Martinez.

CIG Meetings

CIG	Room
Counseling	S.S. Blaisdel
Program Management	S.S. Emerald
Developmental Disabilities	S.S. Nevada
ABI/Speech	Echo Restaurant
Deaf/HH	Atrium II - A
Career Dev. Employ. Trans.	Atrium II - B

11:45 a.m. – 1:00 p.m.

S.S. Stanford/S.S. Blaisdel

Convention Debriefing with
Executive Board and Convention
Committees